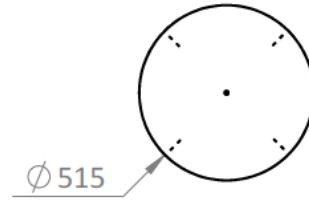


## General

Material Steel

Base Concrete

Colours 



## Electronics

Internal com. CAN BUS

External com. Ethernet

Electric supply 230V

Max. power 4000 W

Anti-vandalism Optional

Humidity sensor Sim

Temperature sensor Sim

Remote control Optional

Illumination Optional

## Information

Area 1,43 m<sup>2</sup>

Screen No

